



TOUCH
MAGIX

2026 CATALOG

IMMERSIVE GAMES
& EXPERIENCES

**Life is a lot like an
arcade game —
when you hit a wall,
learn the pattern,
adapt, and keep
trying. Progress
comes from
persistence.**



"Our mission has been to revive the golden age of games by making skill the foremost ingredient of gameplay. We at TouchMagix are focused on creating games that are easy to understand but difficult to master."

- Anup Tapadia, Founder - TouchMagix

Backed by a passionate team that makes the magic happen!



Awards & Recognitions



Operator Choice
Award Winner



Winner of top 50
emerging companies



Emerge
50 award



Winner of global creative
entrepreneur award



Award for excellence in
Arcade and VR category



Innovation leadership award
for interactive technologies



Top 5 young
entrepreneurs



Top 100
start-ups 2011



Research and Development

We manufacture and create new-age, never-seen-before arcade games, immersive experiences, and interactive display technologies in the US, supported by a world-class R&D facility in Pune, India. Since our inception in 2009, our games and technologies have reached over 100 Fortune 500 companies, as well as customers in the amusement and entertainment industry across more than 40 countries.

Design

While developing our games, we prioritize simplicity, ensuring that players can easily see where they went wrong, learn from those mistakes, and try again. This approach significantly enhances repeat play value. Additionally, we utilize innovative technologies to elevate the grandeur of the gaming experience, creating something extraordinary for those who step out for entertainment.

Manufacturing

All our games are manufactured at state of the art factories in the USA, India and China. Our games are carefully devised, prototyped, and critically tested for gameplay and revenue-earning potential. They undergo a thorough evaluation before making their way to arcade and entertainment centers, where individuals and groups can immerse themselves in the unique experiences offered by TouchMagix's arcade games—truly a level up from anything they've played before.



Customer-First Approach

We recognize that when people seek entertainment outside their homes, the entire experience matters. We strive to deliver a thoughtfully designed social experience they cannot replicate at home, making every visit to our games and experiences memorable.



Quality

While seeing the joy on players' faces is a major driving force for our passionate team, we also focus relentlessly on ensuring profitability through rigorous ROI testing and repeat value analysis. This unique combination of high repeat value gameplay and an ROI-focused approach is what makes TouchMagix stand out in terms of performance. All games manufactured are thoroughly tested for quality and built to global safety standards.



WIN PRIZE



NEW



Fork it to win it!

PRIZE VENDING

Test your timing skills by lining up the forklift to win your prize

Prominent Prize Showcase

High repeat value

Appeals to All Ages

- Skill timing game with 2 player positions
- Showcases 160 regular prizes (H - 4.7 in, L - 2.9 in, W - 2.9 in) & 16 larger-sized prizes (H - 7 in, L - 3.5 in, W - 4.7 in)
- Regular prize auto-load
- Can accommodate different-sized prizes, which are operator selectable

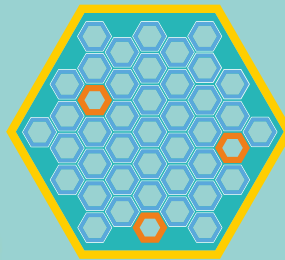


INST. DIMENSIONS - 63" W X 48" D X 93" H
WEIGHT - 830 LBS

TOUCH
MAGIX



NEW



A carnival classic with new-age spin

PRIZE GAME

Toss the pickleballs into a lit hole to win a prize ticket. Earn more prize tickets to win bigger prizes

Appeals to All Ages

20 Seconds Avg Game Time

High repeat value

- Unmanned classic carnival game specifically engineered for an arcade
- Foul line sensor for anti-cheating
- Cabinet features attractive lighting
- Traditional carnival bell that celebrates the winner
- Operator adjustable settings
- Three levels of prize win, all operator-selected



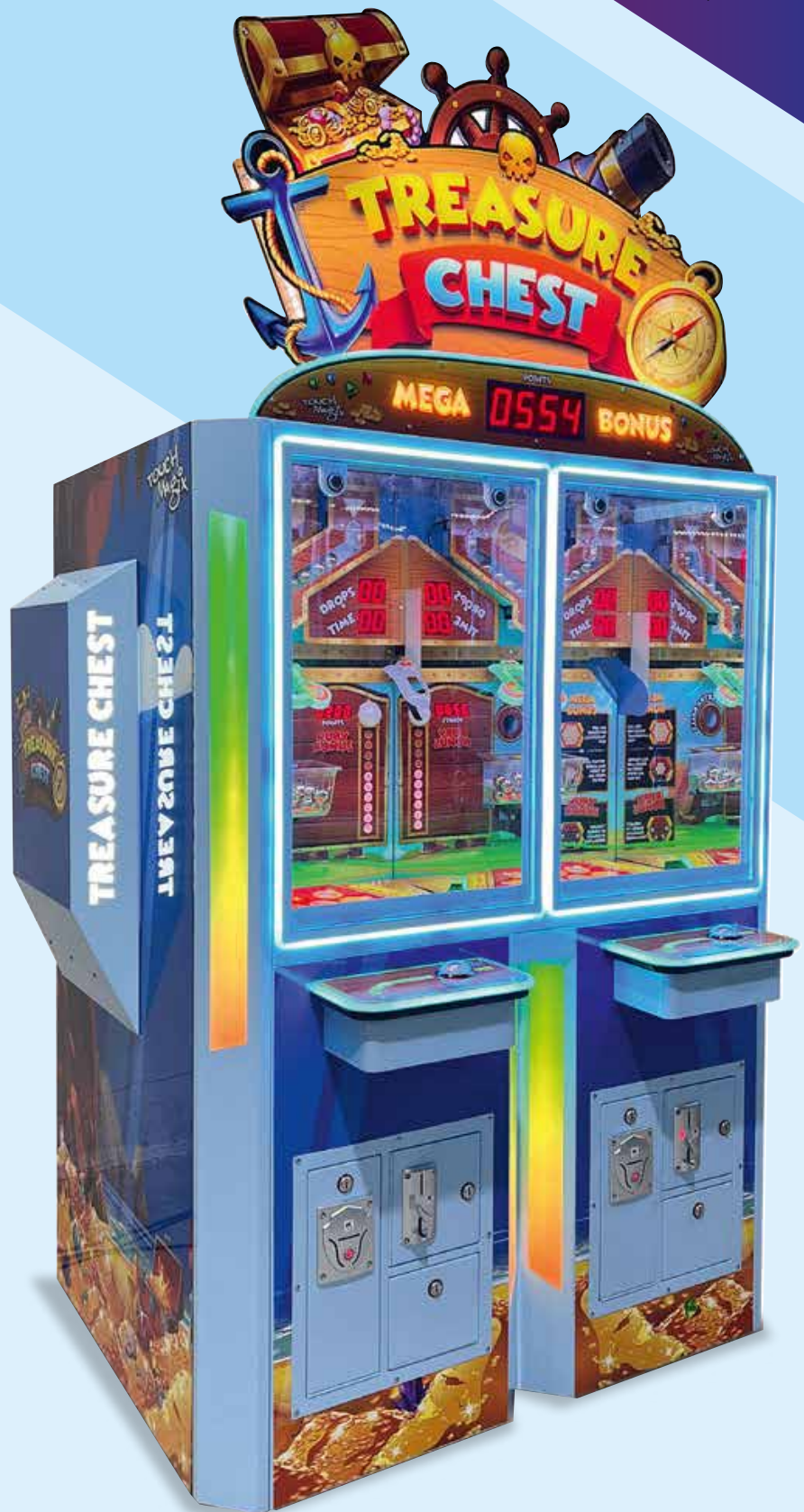
INST. DIMENSIONS - 53" W X 112" D X 112" H
WEIGHT - 1100 LBS

NEW

Your treasure hunt starts with a drop

REDEMPTION

- Two player positions
- Attractive cabinet design with captivating pirate themed artwork
- Operator adjustable payout with point system
- Tilt the treasure chest to fill up the playfield to win bonus
- Appeals to all the ages



INST. DIMENSIONS - 55" W X 42" D X 94" H
WEIGHT - 630 LBS

TOUCH
MAGIC





Take your shot to win a crazy prize!

PRIZE VENDING

Skillfully time the shot to push the prize capsule off the moving carousel into the winning hole

Appeals to All Ages

- Super high earnings with 2-3 weeks ROI
- Variety of pre-stuffed capsules with licensed toys available
- Supports 100mm / 4 inch capsules or balls
- Capsules auto replenish after a prize is won
- Avoid frequent refills with large 400 capsule storage



TOUCH
MAGIX

INST. DIMENSIONS - 55" W X 55" D X 86" H
WEIGHT - 750 LBS

"Aim, Throw and Cause Chaos!"

REDEMPTION

VIDEO

AMUSEMENT

Aim the targets on the rotating wheel to score points. Unlock the bonus level and collect all Minion

- Globally recognised IP now in redemption and amusement format
- Unique gameplay featuring the exclusive dart and banana throwing experience
- Fast-paced gameplay takes players on an action packed journey through Gru's lab
- Multi-level challenge with flexible payout options for various setups

Dimensions - 45"w x 105"d x 112"h

Weight - 750 lbs



Double the thrill with new “Mega Marquee”

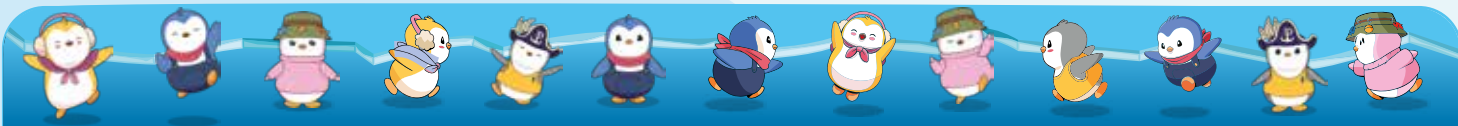


Minions mega marquee dimensions
87.85" w x 14.16" d x 35.73" h

Minions mega marquee cabinet dimensions
87.85" w x 105.1" d x 114.8" h

All right reserved I Touchmagix Inc. USA | www.touchmagix.com
Despicable Me Franchise Universal City studio LLC. All Right Reserved.

Product Catalog I TouchMagix Inc. USA | 11



Dive into an exciting Arctic adventure

Test your timing skills by
jumping over the
oncoming obstacles and
set new records

REDEMPTION VIDEO

AMUSEMENT

- Popular IP now in a redemption format
- Thrilling skill-based gameplay designed to captivate players
- Multiple characters to choose from
- Playable in single-player mode or two-player competitive mode
- Appeals to players of all ages
- Non - ticket mode



INST. DIMENSIONS - 50" W X 35" D X 102" H
WEIGHT - 685 LBS

TOUCH
MAGIX





Challenge yourself in the ultimate ball drop game!

Move and drop the balls using the joystick to complete the colour ladders & pop your way to win the Mega Bonus

REDEMPTION **VIDEO**

- Popular IP now in redemption format
- Multi-directional ball drop gameplay, enhancing player interaction
- Bright and colourful cabinet for maximum visual appeal
- Engaging in-game features, promoting extended play sessions
- Designed to encourage repeat play and increase player retention



INST. DIMENSIONS - 41" W X 57" D X 109" H
WEIGHT - 690 LBS

KEEP OUT KEEP OUT KEEP OUT KEEP OUT

Action-packed game of Skill!

Use the right force on the TNT plunger to demolish the tower by targeting the Bonus block

REDEMPTION VIDEO

- Grand cabinet design
- Compact footprint that fits easily into various venues
- Skill based gameplay
- Pressure sensitive realistic TNT plunger mechanism
- Built in features for repeat gameplay

LINK PLAY

3 CABINETS



2 CABINETS



INST. DIMENSIONS - 38" W X 52" D X 115" H
WEIGHT - 325 LBS

TOUCH
MAGIX



LINK PLAY FOR DX



DX

SE

Incredibly engaging space adventure game

Dodge your spaceship from the dangerous obstacles as you fly through a progressively speeding wormhole

REDEMPTION VIDEO
BAR AMUSEMENT

- Fast paced action game that challenges player's skill
- Immersive gameplay experience
- Designed for repeat play and to maximize engagement
- Responsive spinner control for intuitive game play
- Non - ticket mode



TOUCH
MAZIX

INST. DIMENSIONS - 48" W X 42" D X 122" H
WEIGHT - 460 LBS

A carnival game in 2 player redemption format

Track the cup with the ball underneath in this popular game. Clear all stages to win BONUS!

REDEMPTION VIDEO

- Competitive, skill-based redemption game designed to engage players
- Playable in single-player or two- player modes for versatile gameplay
- Features multiple levels of gameplay, adding depth and challenge
- Average game duration of 60 seconds
- Appeals to players of all ages



INST. DIMENSIONS - 50" W X 35" D X 116" H
WEIGHT - 415 LBS

TOUCH
MAGIX





A classic crane with carnival twist

Track the cup with the bonus ball to earn more chances on the claw & win more rewards

VIDEO CRANE
REDEMPTION

- Skill-based carnival game featuring a crane combo for added excitement
- Front panel illuminated with vibrant RGB lighting for maximum visual impact
- Offers 2 game modes to suit diverse player preferences:
Mode 1: Play to win maximum chances at the crane
Mode 2: Play to win bonus tickets if no plush is won
- Appeals to players of all ages



**TOUCH
MAGIX**



INST. DIMENSIONS - 36" W X 36" D X 100" H
WEIGHT - 400 LBS



Highly Addictive Exhilarating Gameplay!

Be on your toes as you decide between the short or long jump

REDEMPTION BAR

AMUSEMENT

- Addictive Redemption Game
- Appeals to all ages!
- Swipe to continue feature
- 30 seconds average game time
- 43" HD screen
- Non - ticket mode available



INST. DIMENSIONS - 40" W X 33" D X 101" H
WEIGHT - 296 LBS

TOUCH
MAGIX





DIMENSIONS - 43"W X 33"D X 101"H
WEIGHT - 296 LBS



Drift away from cops in this adrenaline pumping car chase to collect gold and cash!

REDEMPTION VIDEO



Stack 20 blocks in this exciting hopping game to win bonus tickets!

REDEMPTION VIDEO
BAR AMUSEMENT



TOUCH
MAZIX

INST. DIMENSIONS - 41"W X 33"D X 100"H
WEIGHT - 296 LBS



Brunswick®



SPARK

LIGHT IT UP

POWERED BY TOUCHMAGIX

Industry's first immersive interactive scoring experience

- Higher revenue per visit with ever expanding library of interactive Sync games
- Higher guest engagement through dynamic content with licensed games
- Encourages socialization with countless experiences
- Operated through existing sync tablet
- Laser projector with 20000+ hour of lamp life



EMAIL - inquiries@brunswickbowling.com
TOLL FREE : +1 (800) 937-2695 (8am – 5pm EST)
PHONE : +1 (231) 725-4966 (8am – 5pm EST)

TOUCH
MAGIX

CONTACT
Brunswick®



NEW

MagixPool™

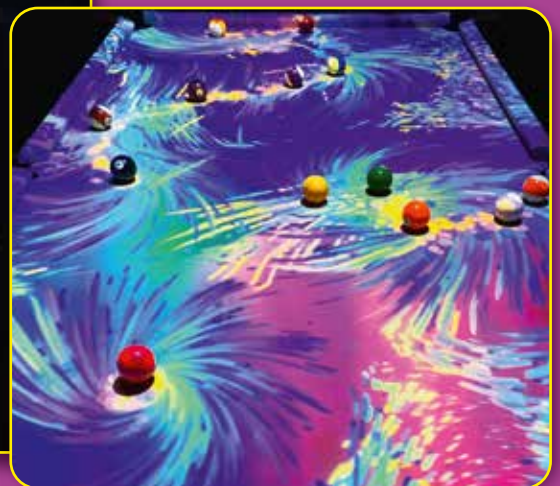
Plug & Play Interactive
Projection for Pool Tables



Bundled with
10 + amazing
games & effects

Level up to the ultimate pool experience!

- Modern design to fit all environments with integrated ultra bright laser projector
- Control effects/games by scanning a QR code from mobile
- Easy to install on all standard pool tables
- Entertainment package to suit all age groups



TOUCH
MAGIX

DIMENSIONS - 7' x 4' Pool Table: 9'7" (2.9M)
(MOUNTING HEIGHT) 8' x 4' Pool Table: 10'6" (3.3M)

WEIGHT - 50 LBS

ARCADE GAMES

Sr. No.	Games	Installation Dimensions	Packaging Dimensions	Weight	Power	Loading Capacity 20ft	Loading Capacity 40ft
1.	Carnival Cups Crane	36" w 36" d 100" h	40" w 48" d 83" h	400 LBS	2Amp@220V/4Amp@110V	9	20
2.	Carnival Cups DX	50" w 35" d 116" h	54" w 42" d 76" h	415 LBS	2.5Amp@220V/5Amp@110V	8	16
3.	Carnival Cups SE	35" w 33" d 99" h	44" w 36" d 83" h	340 LBS	2Amp@220V/4Amp@110V	12	24
4.	Crazy Prize	55" w 55" d 86" h	62" w 62" d 91" h	750 LBS	2Amp@220V/5Amp@110V	NA	9
5.	Dicey Jump	40" w 33" d 101" h	44" w 36" d 84" h	296 LBS	2.5Amp@220V/5Amp@110V	12	24
6.	Drift n Thrift	43" w 33" d 101" h	44" w 36" d 83" h	300 LBS	2.5Amp@220V/5Amp@110V	12	24
7.	Hop n Stack	41" w 33" d 100" h	44" w 36" d 83" h	296 LBS	2.5Amp@220V/5Amp@110V	12	24
8.	Minions Bullseye Mania	SINGLE UNIT 44" w 105" d 115" h DOUBLE UNIT 88" w 105" d 115" h	SINGLE UNIT 45" w 78" d 93" h	1078 LBS	2.5Amp@240V/5Amp@110V	NA	12
9.	Mega Blaster	38" w 52" d 115" h	PALETTE 1 48" w 42" d 89" h PALETTE 2 26" w 24" d 38" h	325LBS 170 LBS	2.5Amp@220V/5Amp@110V	8	17
	Twin Mega Blaster	93" w 52" d 119" h			5.5Amp@220V/11Amp@110V		
	Triplet Mega Blaster	117" w 52" d 119" h			8Amp@220V/16Amp@110V		
	Twin Mega Blaster Mega Marquee	93" w 9" d 23" h					
	Triplet Mega Blaster Mega Marquee	117" w 9" d 23" h			3Amp@220V/6Amp@110V		
10.	Pop it	41" w 57" d 109" h	44" w 60" d 93" h	690 LBS	2.5Amp@240V/5Amp@110V	NA	15
11.	Pudgy Penguins	50" w 35" d 102" h	42" w 48" d 84" h	385 LBS	3Amp@220V/6 Amp@110V	9	20
12.	Space Warp DX	48" w 42" d 122" h	52" w 48" d 78" h	460 LBS	3Amp@220V/6 Amp@110V	4	9
	Space Warp SE	37" w 33" d 100" h	44" w 36" d 84" h	296 LBS	4.5Amp@220V/9Amp@110V	12	24
	Link Play Marquee 2 Cabinets	96" w 38" d 124" h					
	DX Mega Marquee	70" w 9" d 36" h					
13.	Treasure Chest	55" w 42" d 94" h	37" w 48" d 87" h	630 LBS	2.5Amp@230V / 5Amp@110V	10	22
14.	Boxed Up	63" w 48" d 93" h	67" w 44" d 80" h	830 LBS	5.6Amp@220V	6	14
15.	Pickleball Toss	53" w 112" d 112" h	45" w 64" d 89" h	1100 LBS	2Amp@220 V / 4Amp@110V	6	14

OTHER PRODUCTS

1.	Magixbox	9" w 8" d 7" h	20" w 8" d 8" h	20 LBS	2.5Amp@220V/5Amp@110V		
2.	MagixFloor	22" w 30" d 14" h	23" w 31" d 15" h	65 LBS	2.5Amp@220V/5Amp@110V		
3.	MagixPool	30" w 18" d 13" h	35" w 23" d 23" h	50 LBS	2.5Amp@220V/5Amp@110V		
4.	Spark Bowling	23" w 23" d 16" h	25" w 25" d 18" h	485 LBS	2.5Amp@220V/5Amp@110V		

GLOBAL DISTRIBUTORS

North America



Betson Enterprises HQ
303 Paterson Plank Road
Carlstadt, New Jersey 07072
TEL 201-438-1300
sgilmore@betson.com

Betson Mid-Atlantic
2701 West Carson Street,
Pittsburgh, PA 15204-1937
TEL 412-331-8703
nsarioglou@betson.com

Betson West
12981 E. Florence Avenue,
Santa Fe Springs, CA 90670
TEL 714-228-7500
rhunt@betson.com

Betson Southeast
2140 Newmarket Pkwy SE,
Suite 100, Marietta, GA 30067
TEL 770-303-0146
dcapilouto@betson.com

Betson Mountain
2009 South 4130 West Suite B,
Salt Lake City, UT 84104
TEL 385-215-8887
slamoreaux@betson.com

Betson New England
960 Turnpike St. Unit 13,
Canton, MA 02021
TEL 781-821-8533
jkirby@betson.com

Betson Midwest
350 N York Road
Suite A, Bensenville, IL 60106
TEL 630-238-9400
bconway@betson.com

Betson Southwest
1137 Conveyor Lane Suite 118,
Dallas, TX 75247
TEL 214-638-4900
bhorton@betson.com

Betson Florida
4605 LB Mcleod RD, Suite 900
Orlando, FL 32811
TEL 407-851-9269
dcapilouto@betson.com

Betson Northwest
5211 NE 158th Ave, Portland,
Oregon 97230
TEL 503-786-9200
alambert@betson.com



**PLAYER ONE
AMUSEMENT GROUP**

Toronto - P1AG HQ
6420 Viscount Road
Mississauga, ON L4V1H3
TEL 416-251-2122
jerry.power@cinplex.com

Somerset
5 Veronica Avenue, Somerset,
New Jersey 08873
TEL 877-874-2677
Joe.Ingui@cinplex.com

Charlotte
1920 Center Park Drive Charlotte,
North Carolina 28217
TEL 704-357-6284
Pat.McGrattan@cinplex.com

Dallas/Fort Worth
2318 Pecan Court, Fort Worth
Texas 76117
TEL 817-393-9300
Tres.Sprinkle@cinplex.com

Miami
10416 West State Road 84,
Unit #4 Davie, Florida 33324
TEL 954-874-1100
Enzo.Celani@cinplex.com

Orlando
10003 Satellite Boulevard,
Suite 208, Orlando FL 32837
TEL 407-872-1666
tim.paukner@cinplex.com

Los Angeles
2140 Ward Avenue, Simi Valley,
California 93065
TEL 800-860-7469
Jason.Nutt@cinplex.com

Boston
375 Vanderbilt Avenue
Norwood, MA 02062
TEL 908-477-4554
Rich.Listash@cinplex.com

Montreal
1200 Rue Begin
Montreal, QC, H4R1X1
TEL 514-856-2252
Michel.Bergeron@cinplex.com



Des Moines, IA - HQ
1801 Guthrie Ave,
Des Moines, IA 50316
TEL 515-266-6422
terry@mossdistributing.com

Bloomington, MN
9350 James Ave, South
Bloomington, MN 55431
TEL 952-881-8770
sandy@mossdistributing.com

Kansas City, MO
6459 Universal Ave, Kansas City,
MO 64120
TEL 816-231-6600
randy@mossdistributing.com

Milwaukee, WI
TEL 262-853-4659
brent@mossdistributing.com

Denver, Colorado
TEL 215-796-2070
jim@mossdistributing.com



Drouillard International

16400 Collins Avenue, #1141
Sunny Isles Beach, FL 33160, USA
TEL 708-408-3121
enndee2@aol.com



AVS Companies

Chicago - HQ
750 Morse Avenue, Elk Grove
Village, IL 60007
TEL 847-439-9400
tonyshamma@
avscompanies.com

Milwaukee
1667 Independence Ave,
Hartford, WI 53027
TEL 262-457-6030
info@americanvending.com

Houston
8801 Jameel Road,
Houston, TX 77040
TEL 713-523-7366
info@americanvending.com

Dallas
1101 N. Union Bower Rd,
Suite 160, Irving, TX 75061
TEL 214-631-5050
info@americanvending.com

Minneapolis
1166 Cliff Road East,
Burnsville, MN 55337
TEL 763-712-6002
info@americanvending.com



LEGACY COIN

Ed Chermak
2961 Drywall Dr.
Myrtle Beach, SC 29577
Local: 843-626-1900
Fax: 843-448-9899
edchermak@gmail.com



**PRIMETIME
AMUSEMENT** Primetime
amusement

5300 Powerline Rd, Suite 210,
Ft. Lauderdale, FL 33309, USA
TEL 305-770-4263
Toll Free: 800-550-0090
walter@primetimeamusements.com

CENTRAL DISTRIBUTING COMPANY, INC

609 N 108TH Circle
Omaha, NE 68154
TEL 402-493-5600
joe@gamesales.com



Shaffer Distributing

**Shaffer Distributing
Company HQ**
1100 W 3rd Ave, Columbus,
OH 43212, United States
TEL 800-282-0194
scott@shafferdistributing.com

Detroit, MI
35355 Schoolcraft Rd
Livonia, MI 48150-1213
TEL 877-432-1040
bhoward@shafferdistributing.com

Indianapolis, IN
6801 Hillside Court
Indianapolis, IN 46250
TEL 800-876-0789
tdwyer@shafferdistributing.com

Cleveland, OH
8001 Sweet Valley Drive Suite 2
Valley View, OH 44125
TEL 800-800-0678
mottey@shafferdistributing.com

South America



GOLD COAST INTERNATIONAL

Gold Coast International
425 Northern Blvd.
Great Neck, NY 11021
TEL 516-605-0220
GoldCoast@gcigame.com



**GLOBAL
AMUSEMENTS, INC.**

Global Amusements
Javier de la Uz
155 International Golf Parkway,
Saint Augustine, FL 32095
TEL 1 904-429-7783
javier@globalamusements.com

India



CSML *We make fun, a business...*

423, B Wing, Chintamani Plaza, Andheri Kurla Road, Chakala,
Andheri (East), Mumbai 400 099, Maharashtra, India
TEL +91 (22) 28302166 | +91 (22) 49739659
sales@csmlindia.com

Oceania



Zax Amusements
1661 Centre Rd,
Springvale VIC 3171, Australia
TEL 03-9676-9190
info@zax.com.au

Turkey



M Games
Meridyen Oyun Makinalari
Paz.Tic.Ltd.
Sisli, Istanbul, Turkey
TEL +90 532 602 72 20
eakay@amf.com.tr

Middle East



Warehouse of Games

P.O. Box: 61361, Jebel Ali-Free
Zone Dubai, UAE
TEL +971-4-883-5880 , +971 4 888 5580
sales@wogme.com

Japan



Bandai Namco Entertainment Inc.

Production department 3, 4-5-15, Higashi-Shinagawa,
Shinagawa-Ku, Tokyo 140-8590, Japan
TEL +81-3-6744-4510
katsuhiko_mikami@bandainamcoent.co.jp



TOUCH
MAGIX

INTERNATIONAL SALES

Varun Mahajan

US ☎ (646) 893-0115

India ☎ +91770-907-7774

✉ varun@touchmagix.com

Shreyas Rai

US ☎ (310) 230-5083

India ☎ +91 909-670-1000

✉ shreyas@touchmagix.com

AMERICAS SALES

Debbie Gonzalez

US ☎ (310) 230-5083

✉ debbie@touchmagix.com

© All rights reserved | TouchMagix Inc. USA | www.touchmagix.com